

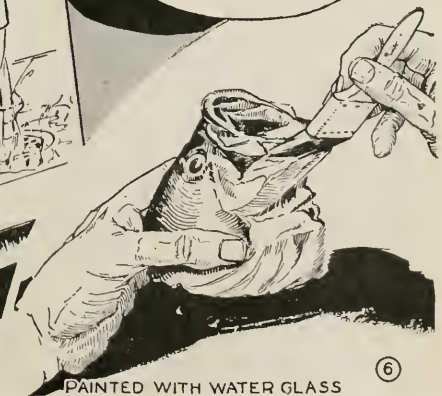
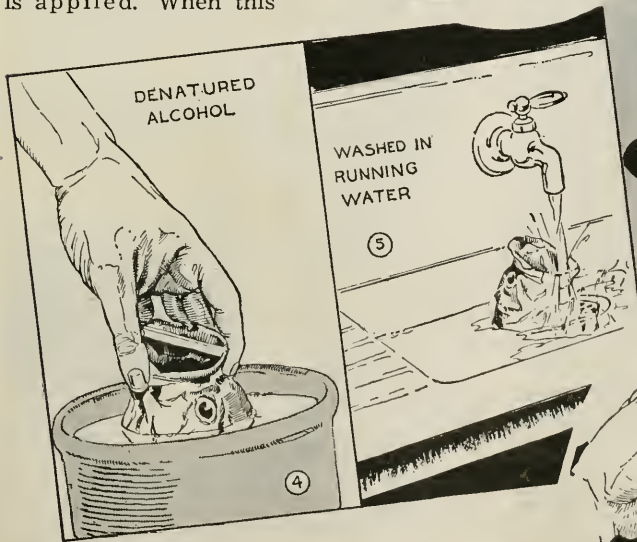
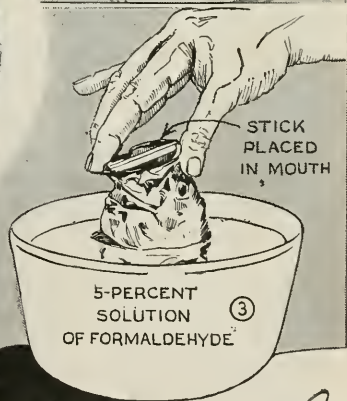
# Game Fish ASH TRAY

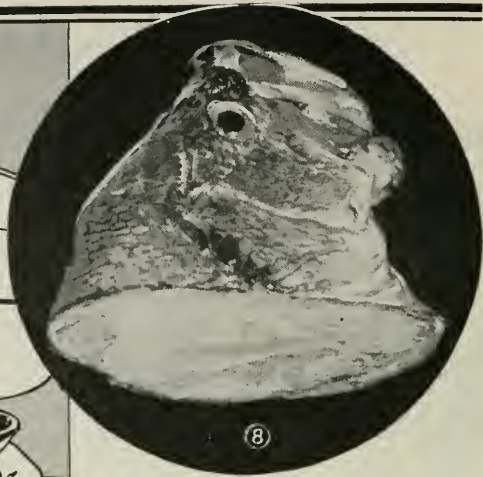
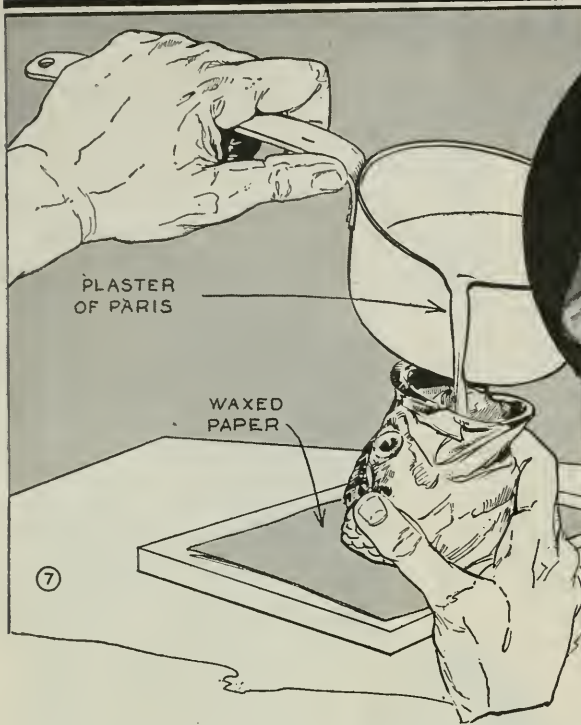
*proves the story*

By L. IRWIN DUPUY

WHILE the thrill of catching a big fish lasts only a few minutes, the pleasure of reminiscence, or telling your friends about it, can last for years if you mount the head to serve as a paperweight, penholder or ash tray, Fig. 1. When removing the head, it's best to leave about 2 in. of the skin on it. If you forgot to do this, the skin can be imitated with plaster of paris. After as much flesh as possible has been removed, the mouth is propped open with a stick so that it resembles the one in Fig. 2. Then it is placed in a bucket or can of 5 per cent-formaldehyde solution, Fig. 3. It should be left in this solution for at least 3 days, or it can be left until ready for use.

When you are ready to mount the head, it is taken out of the solution, rinsed in running water as in Fig. 5, then dipped in denatured alcohol, Fig. 4, and hung up to dry. After it has dried, which will only be a few minutes, it is given a coat inside and out of water glass, Fig. 6. When dry, a second coat is applied. When this





and color can be used if a black dot is painted in the center of each one. When the plastic is dry, give it two coats of clear varnish. If the plaster shows, or if there are any light spots on the head, they can be touched up with a mixture of black and medium-brown oil color in a few drops of clear varnish to match the rest of the fish.

has dried, the head is given a coat of quick-drying clear varnish, which is repeated in a few hours. As soon as the second coat of varnish is dry, the head is ready for a base, which can be made of plaster of paris.

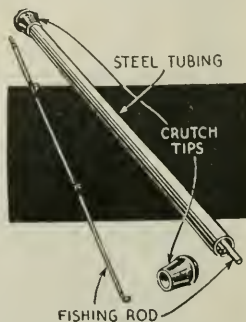
Twist a 3-in. length of small wire to the backbone in a position where it won't show, but so it will go into the base material. The head is then placed on a piece of waxed paper on a flat surface and the plaster of paris is poured in through the mouth, Fig. 7. When the plaster is about  $\frac{1}{2}$  to  $\frac{3}{4}$  in. deep, it is spread out on the inside and smoothed up on the outside in any place where it pushed through. If the head was cut off too short and no skin was left to cover the back of the neck, the plastic material is built up to fill these places. When the plaster is almost dry, artificial scales are worked in with a sharp instrument to make it look natural. Place a small piece of plaster for the tongue as this improves the inside of the mouth. The name and date can be cut before the plaster gets hard, either inside the mouth or on the back of the base.

Fill the eye holes with the same base material and set the eyes in this. Artificial glass eyes are not expensive and make a neater job, but buttons of the proper size

Don't forget to paint around the eyes. Next, mix a little medium-green in oil with varnish and apply this as dots with a small piece of cotton on a stick. While still damp rub over this with a cloth that will not shed lint, to give it a natural greenish color. The inside of the mouth is rubbed with a light flesh color in varnish. The tongue and the surfaces around the teeth are painted with a darker flesh color to brighten up the inside of the mouth. Fig. 8 shows the completed head.

## Steel-Tube Case for Fishing Rod

Fishing rods of the one-piece type may be protected against rough handling by inserting them into a length of thin-wall steel tubing. These are cut to the required length and both ends are closed with rubber crutch tips, which may be purchased at a dime store.



—John C. Michalek, Kansas City, Mo.